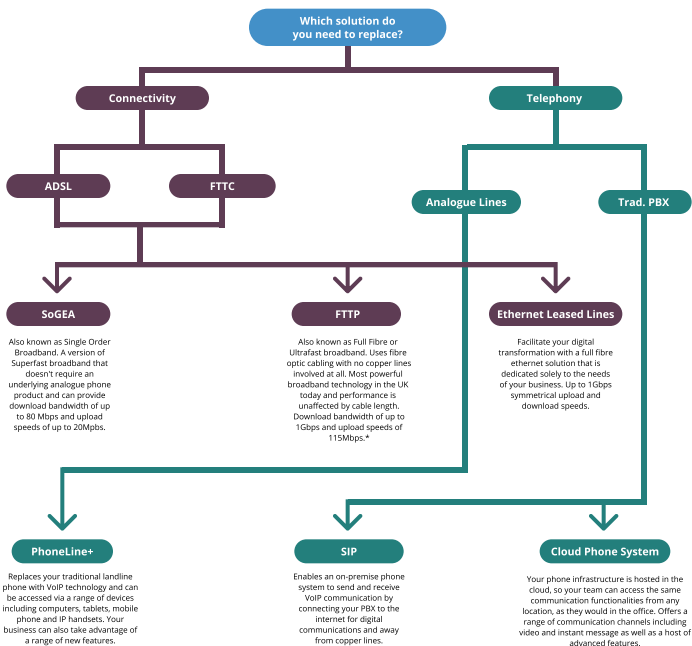


Which Digital Alternative Do I Need?

The PSTN/ISDN Switch Off isn't far away and locations around the UK have already lost access to this technology. If you are still relying on solutions that are connected to the PSTN, then you need to consider moving across to digital solutions soon. But which solution do you need? Check out our flowchart to find the right digital alternative for your legacy, PSTN-reliant solutions.



Switch On to Digital Solutions with Elite

Whether you're making the move to VoIP telephony or upgrading your connectivity solutions to full fibre, our team of specialists are here to help.

Call: 0344 875 8880

*Only suitable for businesses in areas that have full fibre availability.